



**Perfect Washrooms** is a family business that has worked with a range of market leaders in the washroom sector. We have extensive experience in engineering, component sourcing and installation. At **Perfect Washrooms** we have combined our experience and used it to offer services ranging from initial planning, through acquisition of compatible products to final stages of assembly and installation.

**Perfect Washrooms** offers a wide range of choice, to fit your entire washroom needs and being based in the Midlands can offer speedy national coverage,

**Our service caters for -**

- Schools Pre-school, Infants, and juniors, Colleges, Universities.
- Offices
- Restaurants.
- Leisure Centres, Swimming Pools
- Public Area
- Hospitals and Nursing homes
- Supermarkets

All our work complies with Building Regulations Part M, Disability Act (DDA) and Healthcare equipment guidelines of the Health Regulations HTM64

We provide modular or bespoke styles, and can offer colour samples of Polyrey, Trespa, or Formica laminates from their standard washroom range.

Whatever your needs, supply only or supply and installation, **Perfect Washrooms** can provide the washroom solutions tailored to meet your requirements.

Please click on our links for further information.

**Perfect Washrooms**  
**45, Millers Park, Wellingborough, Northants,**  
**NN8 2NQ**

**Tel: 01933 443402 Fax: 01933 443402**  
**Mobile: 07502 122 154 Mobile: 07766 767 131**  
**Mobile: 07877 770 817**

**[info@perfectwashrooms.co.uk](mailto:info@perfectwashrooms.co.uk)**

# Cubicle Systems

SUNSHINE



Moonbeam plus



MOONBEAM



PLUTO



STAR



ECLIPSE



Counter Vanity



Semi-recessed Vanity



# Sunshine



# Sunshine

Solar System 19mm Melamine Faced Chipboard (MFC) offers high quality at affordable prices. Hard wearing, easy to install, Edged and lipped with matching contrasting PVC.

It is applicable to dry areas only.

## **IRONMONGERY/ACCESSORIES**

Cubicle brackets, hinges, leg, toilet roll holder, indicator bolt (with emergency release), coat hook all in satin anodised aluminium.

Head rail: Satin anodised aluminium

Indicator Bolts and Faceplate with anti finger trap, and emergency release.

Channel or Cleats available

Head rails add strength and durability

Hinges are adjusted for perfect alignment

## **DIMENSIONS**

Height 2000mm including 150mm clearance gap.

Depth 1500mm -1800mm

Door: 1850mm 600mm-750mm

Pilaster: 80mm-300mm

## **OPTIONAL EXTRAS**

- Solid stainless steel hardware
- Channels

# Moonbeam plus

## 316 Grade Stainless Steel Hardware



# Moonbeam plus

Moonbeam plus System Solid Grade Laminate (SGL) 13mm offers high quality. When it comes to challenging environments, no system performs better. Coping with the daily demands, resistance to water, with stands the humidity of area.

## **IRONMONGERY/ACCESSORIES**

Cubicle brackets, hinges, legs, indicator bolt, headrail, coat hook all in 316 Grade Stainless Steel Cubicle brackets, hinges, leg,

Indicator Bolts and Faceplate with anti finger trap, and emergency release.

Hinges are adjusted for perfect alignment

## **DIMENSIONS**

Height 2000mm including 150mm clearance gap.

Depth 1500mm -1800mm

Door: 1850mm 600mm-750mm

Pilaster: 80mm-300mm

## **OPTIONAL EXTRAS**

- Satin anodised aluminium hardware
- Channels or cleats available

Ideal for

Leisure centres, Swimming Pools, showers, schools, colleges, detention centres and prisons.

# Moonbeam



# Moonbeam

Moonbeam System Solid Grade Laminate (SGL) 13mm offers high quality. When it comes to challenging environments, no system performs better. Coping with the daily demands, resistance to water, with stands the humidity of area.

## **IRONMONGERY/ACCESSORIES**

Cubicle brackets, hinges, legs, indicator bolt, headrail, coat hook all in Satin Anodised Aluminium (SAA) Cubicle brackets, hinges, leg, Indicator Bolts and Faceplate with anti finger trap, and emergency release. Hinges are adjusted for perfect alignment

## **DIMENSIONS**

Height 2000mm including 150mm clearance gap.  
Depth 1500mm -1800mm  
Door: 1850mm 600mm-750mm  
Pilaster: 80mm-300mm

## **OPTIONAL EXTRAS**

- Solid stainless steel hardware
- Channels or cleats available

Ideal for

Leisure centres, Swimming Pools, showers, schools, colleges, detention centres and prisons.

# Pluto



# Pluto

Pluto cubicle system for the younger child.

## **PARTITIONS/DOORS/PILASTERS**

Core Material: 12.5mm solid grade laminate.

Colour/Finish: Solid grade laminate.

Edge Treatment: All edges radiuses and polished, with rounded corners.

## **IRONMONGERY/ACCESSORIES**

Cubicle brackets, legs, hinges, indicator bolt (with emergency release) coat hook all in Satin anodised aluminium (SAA)

## **DIMENSIONS**

Overall Cubicle height

1350-1450 High

1500-1800 Depth

Doors can be supplied with easy to use indicator bolts or magnetic catches and pull handles if preferred.



# Star



# **Star**

Star combines hidden strength with subtle style. Slimline pilasters when space is minimal, yet hardwearing creates a clean and contemporary appearance ,whilst careful engineering has given Star its durability.

## **PARTITIONS/DOORS**

18mm High Pressure Laminate or 13mm Solid Grade.

## **IRONMONGERY/ACCESSORIES**

Cubicle brackets, indicator bolt (with emergency release), hinges, coat hook and adjustable legs in powder coated aluminium.

Head rail: Bull nosed aluminium in powder coated finish

## **DIMENSIONS**

Height 2000mm including 150mm clearance gap.

Depth 1500mm -1800mm

Door: 1850mm 600mm-750mm

## **PILASTERS**

Profiled extruded aluminium for maximum strength and durability.

# Eclipse



# Eclipse

The Eclipse has a premium look and feel reflecting the highest quality build specification. Cubicles are flexible to suit any floor layout.

They are simple to install and maintain, being robust and durable.

## **PARTITIONS/DOORS**

18mm High Pressure Laminate or 13mm Solid Grade.

## **PILASTERS**

Profiled extruded aluminium for maximum strength and durability.

## **IRONMONGERY/ACCESSORIES**

Cubicle brackets, indicator bolt (with emergency release), hinges, coat hook and adjustable legs in powder coated aluminium.

Head rail: Bull nosed aluminium in powder coated finish

## **DIMENSIONS**

Overall cubicle height:

# Vanity Semi-recessed or Counter Top.



Tap, Waste and Accessories not included.



# Vanity Semi-recessed or Counter Top.

Vanity Units are made to measure and available  
Semi-recessed 300mm deep  
Counter Top 600mm deep  
19mm High Pressure Laminate while, under panels  
are constructed from high performance MFC as  
standard.

Overall vanity height is 900mm - this can be  
manufactured to suit your individual needs.

# Lockers Benches and Ducts



# Doc M Packs



**Doc.M rimless super pack**



**Doc.M rimless ambulant btw pack**



**Doc.M Shower Pack**



**Doc.M value pack**

**Trust Twyford every time**

# Solar Rimless Pan

**NEW Sola School Rimless pan** From nurseries through to adult education and less abled.

Sola School is the only rimless school pan range. With no hidden channels and no dirt traps it is ultra hygienic and easy to clean.

Sola is also economic and ecologically friendly too – capable of flushing effectively on 4 litres to meet BREEAM specifications.

## **Available as:**

- 300mm pan height for Pre-school and Infants
- 350mm pan height for Infants and Juniors
- Back-to-wall or close coupled options for flexible installation
- White or blue seat options
- Also available - Sola Rimless standard height pan.

- **Nursery • College and Universities**
- **Primary • Secondary • Utilities**

**For life in education - trust Twyford every time**



# TARASAFE FLOORING

HSE compliant slip resistance

Durable KS/Group T wear rating - suitable for heavy traffic commercial use.

Easy maintenance due to permanent Sparclean surface treatment, a smooth surface treatment that eliminates dirt traps.

Maximum hygiene due to anti bacterial and fungicidal Samosol treatment.

**Safety Flooring**

**Tarasafe Ultra / Ultra Comfort** **R10** **K5** **SparClean®** **Samosol®** **HSE Compliant**

Comfort 2 m. Compact 2 m.

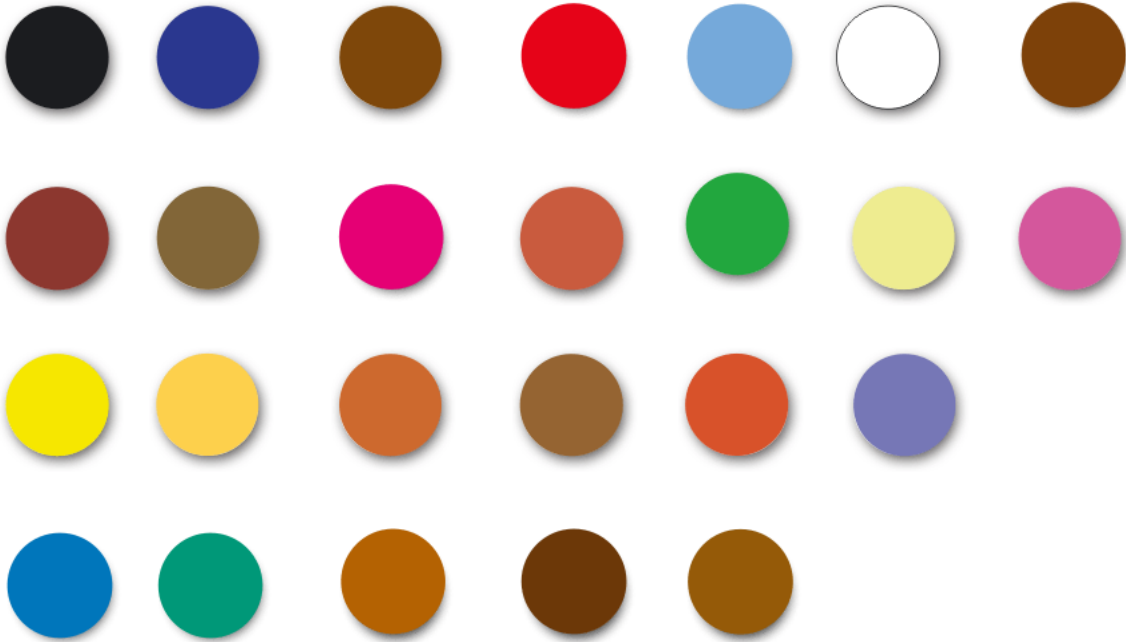
- HSE compliant slip resistance
- Durable: KS/Group T wear rating - suitable for heavy traffic commercial use
- Deep inlay of carborundum granules for longlife slip resistance
- Easy maintenance due to permanent SparClean® surface treatment: a smooth surface treatment that eliminates dirt traps
- Maximum hygiene due to anti bacterial and fungicidal Samosol® treatment.
- Superb flexibility for ease of installation and coving; easily hot welded for water impervious finish.
- Comfort version for high sound insulation: VHD foam backing (16 dB)

 7383 Diopside	 8592 Aventurine	 7384 Citrine
 8607 Aragonite	 7541 Amazonite	 8232 Goldstone
 7791 Zircon	 4754 Laboradite	 8166 Amber
 7758 Hematite	 7482 Malite	 8177 Coral
 8829 Sardonyx	 8013 Jasper	 8184 Carnelian

**Gerflor**



## Crown CLEAN EXTREME Scrubbable Matt (Water Based)



Crown Clean Extreme Scrubbable Matt provides a true matt finish with the durability and longevity that allows repetitive cleaning with the added benefit of excellent stain resistance.

Ideal for use in high traffic areas. Touch dry in 2 hours.  
Recoat able in 4 hours.

Extends maintenance cycles by returning to 'as new' condition after cleaning – reducing the need for costly redecoration

# CLEANING AND MAINTENANCE INSTRUCTIONS

## **Cleaning laminate Components.**

Always start by trying the gentlest method of cleaning. If a stain persists, work through the following steps repeating each step several times if the stain seems to be disappearing.

**STEP 1** For routine cleaning use a damp cloth or sponge and a mild soap or detergent, rinse the panels and dry on completion.

**STEP 2** For difficult stains apply a mild household cleaner/detergent with a soft bristled brush, rinse the panels and dry on completion.

**STEP 3** If stubborn stains persist, use a non-scratch cleaner such as CIF or Flash, scrubbing lightly with a soft bristled brush for 10 – 20 seconds, rinse the panels and dry on completion.

**STEP 4** If a stain persists, apply undiluted household bleach, let stand for no longer than 2 minutes, and rinse thoroughly with warm water. **DO NOT** expose the surface to household bleach to prolonged periods of time, as this may lead to permanent discolouration.

**STEP 5** If the surface has been discoloured through long exposure to industrial grime, clean carefully with a cram cleaner containing a mild abrasive, rinse the panels and dry on completion.

**DO:** Always rinse thoroughly after cleaning, (residue from cleaning solutions is the single most cause of damage to laminate surfaces)

**DO:** Wipe up spills and rinse immediately

**DON'T:** Use acid or abrasive cleaners, expose the laminate to household bleaches for bleaches for prolonged periods of time, or apply any excessive scrubbing especially on gloss services.